

Corporate Overview

Sumadhura Technologies Limited established in the year 1999 to offer extensive services in Geomatics and Groundwater drilling. Subsequently Sumadhura Geomatic Services Division has emerged as another company by the name '**Sumadhura Geomatica Pvt. Ltd.**' in the year 2004 to offer Geospatial and Engineering Consultancy Services. With rich experience and competent staff we are well positioned to make knowledgeable recommendations, deliver high-quality work and achieve successful implementations. Sumadhura is a force to reckon with in providing cost effective solutions.



The Clientele

Sumadhura is recognized by NRSA, Dept. of Space, Government of India for executing digital photogrammetric projects and other mapping services. Our wide range of clients includes NRSA, FAO, Irrigation & CAD Depts., Public Health & Municipal Engineering departments; NGO's, and various public, private sector organizations across the world.

The People

Sumadhura Geomatica has its Head Quarter's in Hyderabad, India and has presence in Germany with a workforce comprising of GIS Engineers, Photogrammetrists, CAD Engineers, Image Processing Specialists, Application Programmers, Geologists, Geophysicists, Hydro-geologists, Surveyors, Remote Sensing Specialists, Irrigation Experts and Application Scientists.

Services Overview

Our core focus is on different infrastructure consulting projects namely Water, Power, Telecom, Oil & Gas. Our business interests in the above segments as listed below, but not limited to:

- Survey & Mapping
- Remote Sensing & GIS Applications
- Geodetic/Topographical surveys
- CAD/GIS/GPS services
- Geotechnical and Soil investigations
- Geological, Geophysical and Geochemical Surveys
- Feasibility studies, investigations and preparation of detailed project reports
- CAD & GIS integration for implementation of SCADA/Internet GIS

The Infrastructure



Sumadhura is equipped with state of the art infrastructure covering latest workstations, servers, large format scanners, plotters and UPS facilities at its production facilities. We have a vision and matchless business acumen in acquiring latest advancements in the industry to scale up to the expectations of the clients.

Delivery model

Offshore execution model is economic and our regular practice. We have extensive experience in performing significant tasks at client location (onshore). However, offshore model always help the client to reduce the costs and time to deliver the outputs. Combination of these two models also may be taken up wherever required.

SUMADHURA: Survey & Mapping Division

Sumadhura Geomatica supports a diverse range of industries and organizations with specialized geo-spatial information services and spatial solutions. The Company provides innovative solutions to land-related surveying. We use sophisticated equipment in the most remote regions and in populated cities; serving clientele ranging from Irrigation Department to Urban Infrastructure Management Authorities.

The prime resource of the Survey Division is its people: their academic foundation, training, skills, experience, knowledge and determination. Our technical people have their professional roots in Surveying, Geodesy, Geology, Geography and Cartography. They are supported by professional finance and administrative staff. The Survey staff profile shows a balance of experience and youth, practical application and scientific grounding.

- Surveying and Mapping
- Geodetic & Control Surveys
- Hydrographic & Bathymetric surveys
- Detailed field investigations of various infrastructure projects



Knowing how to collect or acquire data for a specific application can be a major challenge for organizations that do not have the experience and/or knowledge about the technologies or sources of spatial data.

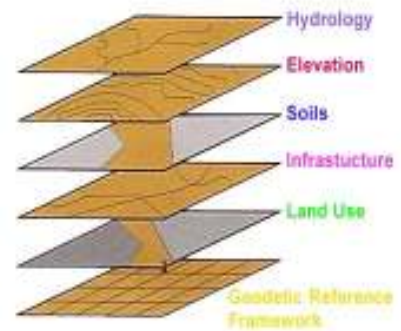
Sumadhura Geomatica assists clients to identify, recommend and obtain the most appropriate and cost-effective data to meet the needs of their organization. Data may be acquired from multiple sources, through physical data collection, remote sensing, government and commercial services.

SUMADHURA – GIS Application Development Division

Sumadhura Geomatica designs and builds complete spatial data management systems for Internet deployment and other custom requirements. We provide experience with the major GIS technologies such as ESRI, Bentley, Intergraph, AutoDesk and Leica-Geosystems. Our staff uses development tools such as VB, Rational Rose, PHP and ASP among many other current technologies

Sumadhura applications are developed using a proven application development methodology. This guarantees that applications developed by **Sumadhura** will meet your requirements. All applications are developed with extensive programmer-user interaction with numerous sign-off points from conceptual design and prototyping through coding, delivery, documentation, and training.

We provide support for the entire lifecycle of applications, ranging from user needs assessment, conceptual and detailed design, prototyping, coding, testing, user documentation, training, user support, and application enhancements. **Sumadhura** provides cost-effective application development through years of experience.



Sumadhura applications are developed with user-friendly, menu-based intuitive interfaces using AML™ for ARC/INFO®, through customizing MapObjects™ with Visual Basic® and through Avenue™ for ArcView®.

SUMADHURA – Photogrammetric Mapping Services Division

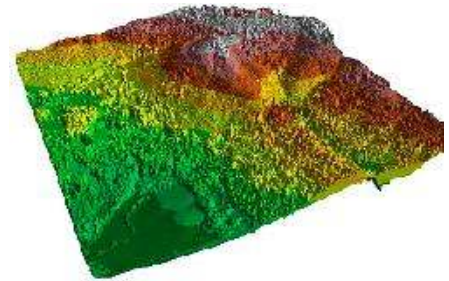
Aerotriangulation

- State-of-the-art Softcopy photogrammetric workstations are used.
- Automated AT is available
- Manual AT processing is preferred for its higher accuracy.
- A root mean square (RMS) error of less than [1/10,000 times flying height] is typical.



Topographic and Planimetric Feature Extraction

- Extraction of details in a Microstation/AutoCAD environment and can be exported to any CAD/GIS format.
- Planimetric feature extraction links with applicable feature tables or database dictionaries.
- High quality DTM, DEM and/or contour files are derived
- SUMADHURA GEOMATICA has extensive expertise with large and small scale mapping (1"=40' and smaller).



Digital Elevation and Terrain Modeling (DEM, DTM)

- SUMADHURA GEOMATICA excels at high resolution TIN and surface model preparation.
- Optimal data collection methods and meticulous modeling capabilities are implemented.
- Automatic contour generation and advanced manual contour smoothing facilities/software are available.
- SUMADHURA GEOMATICA has expertise in working with hard and soft breaklines and high density mass points.

Map Editing

- SUMADHURA GEOMATICA delivers innovative map sheet layout and design with advanced contour interpolation.
- Cleaning and topological structuring of planimetric data is provided.
- A variety of cartographic editing, layout and separation processes are available.

Digital Orthophotography

- SUMADHURA GEOMATICA uses the latest, superior quality orthorectification techniques.
- Advanced softwares are used to correct camera, lens and relief distortions.
- Imagery processing includes precise dodging, mosaicking and global tone balancing.
- Seamlines are generated automatically and edited manually to ensure seamlessness between the tiles.
 - Special attention is given to bridges to avoid smearing at the stereo compilation level.
 - An intense quality assurance process ensures 100% adherence to customer specifications.



Large Scale Mapping using high resolution satellite data

The operational availability of high-resolution satellite imagery, namely IKONOS, QUICK BIRD, Landsat TM, and latest CARTOSAT, opens up new possibilities for investigating and monitoring natural resources. Compared with information acquired by traditional methods, these data offer a number of advantages. High resolution satellite data has a great impact over urban



mapping and planning activities when it is made to the appropriate accuracy levels.

The flexibility and accuracy of satellite mapping were demonstrated by using a different kind of satellite data, which is more expensive but offers the possibility of mapping at a large scale (1:5 000). For an area of particular interest, IKONOS very high-resolution satellite data (1 m – pan sharp) were used successfully to:

- Update existing large-scale soil and topographic maps (drainage system, road network...);
- Update large-scale land cover/land use inventory and monitoring of permanent crops
- Urban Planning

SUMADHURA – Engineering consultancy division

Engineering consultancy division helps cope with the growing demand for work created by the success of the Company. We have eminent Professional Engineering Specialists as Consultants. We provide our clients with a full range of innovative services that are delivered in a cost effective and timely manner ensuring compliance with project requirements. Our consultants bring in diverse experiences across their wide endeavors. They are knowledgeable of on site requirements of contractor and client relations. They perform impartially in the best interest of the Client.



Our Consultancy portfolio caters to various needs of infrastructure projects, such as:

- Detailed Investigation studies
- Detailed Engineering surveys
- Strategic planning & System design
- Preparation of Designs & Estimates
- Project Proposals & Documentation
- Preparation of tender schedules and documents
- Evaluation & assessment studies for EPC Projects

Our successful saga continues in roads, irrigation projects, urban infrastructure works, dams, bridges and tunnels. With rich experience and competent staff we are venturing in to new sectors like oil, engineering automation and exploring horizons in new demographic locations across the world. Sumadhura is looking for companies to spread its reach with a clear vision and win-win business proposition to endeavor across different geographic locations.

Sector-wise Service Profile

I. UTILITIES

Sumadhura Geomatica, with its vast expertise in the Engineering & Geospatial services, has recognized the importance of the value added services to utilities. Sumadhura Geomatica with its highly skilled domain experts combined with the expertise in RS/GIS Technologies has developed GIS applications for Power, Telecom, Water and Gas.

- 1.1. Data Collection
- 1.2. Survey and Mapping
- 1.3. GIS Implementations
- 1.4. GPS Data Collection
- 1.5. GPR Applications



II. WATER/IRRIGATION

Sumadhura Geomatica provides consultancy services covering a wide spectrum of activities ranging from field investigations, sub-sectoral studies deploying Hi-tech tools and State - of - the-art technologies, appropriate and innovative approaches to suit to the natural environment and outputs as desired in conformity to the various stages of studies pertaining to Pre-investment, Pre-feasibility, Feasibility and Detailed Project preparation stages, implementation and operation. Sumadhura Geomatica draws its strength from the major Fields of Specialization in the Water Resources sector covering the following: Irrigation, Drainage and Water Management, Flood control and River Morphology, Dam and Reservoir Engineering, Water Supply and Sanitation etc.

- 2.1. Feasibility Studies
- 2.2. Preparation of DPR's
- 2.3. Irrigation Planning & Investigations
- 2.4. Detailed Designs and Estimates
- 2.5. Socio Economic Studies (R & R)
- 2.6. Environmental studies (EIA/EMP)
- 2.7. PMF Studies
- 2.8. Hydrographic/Sedimentation studies
- 2.9. Dam Safety and Tank Capacity Studies
- 2.10. Catchment area Studies
- 2.11. Disaster Management Studies
- 2.12. Water Management and Irrigation MIS



III. URBAN INFRASTRUCTURE

In the Urban Infrastructure sector, Sumadhura Geomatica provides services in the fields of Master Planning, Town Planning, Transport Planning, Urban Design, Residential Development, Public Health Engineering and Tourism. Sumadhura Geomatica specializes in the integrated development of Special Economic Zones, covering a wide range of services like identification of Economic Themes, Feasibility

Study, Master Planning, Project Preparation, identification of developers and marketing. Sumadhura Geomatica's Town planning services cover planning, urban design, residential development, transport analysis and environmental engineering.

- 3.1. Feasibility Studies
- 3.2. Detailed Investigations
- 3.3. Infrastructure Planning
- 3.4. Infrastructure Mapping
- 3.5. Engineering Designs and Estimates



IV. ROADS & HIGHWAYS

Sumadhura Geomatica provides comprehensive road transport consultancy services covering all aspects of conceptual and detailed design, construction, supervision, operation and maintenance of highways, expressways, feeder/rural roads, bridges/viaducts and tunnels, maintenance planning / management of road network, strategic planning for improvement / upgrading of road systems.

- 4.1. Feasibility Studies
- 4.2. Corridor Survey
- 4.3. Design of Road Geometrics
- 4.4. Design of Bridges and Flyovers
- 4.5. Geotechnical Investigations



V. OIL, GAS & MINERALS

Sumadhura Geomatica offers broad spectrum of Geo-services in Oil, Gas and Mineral exploration activities. We carry out Geo-technical investigations, Shallow Seismic, Electrical sounding, profiling and Imaging, Magnetic & Gravity surveys in identifying Gold and Diamond prospects, Electromagnetic and Induced Polarization Surveys to supplement Gold and Diamond targets, Mapping Base metal provinces, Industrial minerals like Iron, Bauxite, Nickel, Cobalt etc., and Borehole Logging.

- 5.1. Airborne Geophysical Surveys
- 5.2. Shot hole Drilling & Seismic Job Services
- 5.3. Geotechnical Investigations for Oil & Gas
- 5.4. Geotechnical data analysis
- 5.5. Geological mapping
- 5.6. Ground Geophysical Surveys
- 5.7. Geochemical Sampling, Analysis & Interpretation
- 5.8. High Resolution Remote Sensing Data Processing, Analysis and Interpretation



VI. ENERGY

Sumadhura Geomatica is fully equipped to carry out the consultancy assignments in the transmission and distribution of power from concept to commissioning, in technical development, innovation and project management, covering the range from underground distribution system in urban areas, rural electrification to 400 kV transmission lines, Air Insulated Substation (AIS) to Gas Insulated Substation (GIS) in difficult environmental areas and with modern computerized controls with SCADA facilities.

- 6.1. Feasibility Studies
- 6.2. Transmission line Corridor Surveys
- 6.3. Design Engineering Services
- 6.4. Route Optimization
- 6.5. Energy Management
- 6.6. Asset mapping using GIS
- 6.7. Preparation of DPR's for Small Hydro-Electric Projects
- 6.8. SCADA Implementation



VII. PORTS & HARBORS

Sumadhura Geomatica also diversified its activities in the fields of Ports, Harbours and Inland Waterways along with emphasis on private sector investment in ports infrastructure. Sumadhura Geomatica provides total consultancy services from concept to commissioning for Ports, Water Resources and Inland Waterway Terminals, including planning, design and logistics, surveys, field investigations, project reports, detailed engineering and project management.

- 7.1. Feasibility Studies
- 7.2. Engineering Investigations
- 7.3. Geotechnical Services
- 7.4. Hinterland Planning & design
- 7.5. Project Appraisals
- 7.6. Inland Waterways
- 7.7. Topographic and Hydrographic Surveys



VIII. PLANTS & PETROCHEMICALS

Sumadhura Geomatica's Engineering Design Automation Business Group provides state-of-the-art Plant & Mechanical Engineering solutions. Complete solutions and services are provided within the Indian market, while specialized services are offered worldwide for Design & Detailed Engineering, both in Plant & Mechanical Engineering. These services range from the creation of intelligent databases for Piping & Instrumentation drawings, to complete plant visualization for walkthroughs, to Production modeling, 3D Plant modeling and detailed engineering services (structural, piping and instrumentation).

Sumadhura Geomatica enjoys the reputation of being able to add value to its customer's business primarily because of its diverse industry exposure and experience in the area of Mechanical Design Automation (MDA). The offerings include end-to-end solutions from PTC and range of high end services including Product Design and Detailing, Engineering Analysis, Web enabled design automation and manufacturing applications.

- 8.1. As Built Drawings
- 8.2. Plant Data Acquisition
- 8.3. Plant Design Solutions
- 8.4. SCADA Implementations
- 8.5. Mechanical Design Automation
- 8.6. Geotechnical and subsurface investigations
- 8.7. EIA/EMP Studies



IX. NATURAL RESOURCES

Sumadhura Geomatica with its highly skilled domain experts provides innovative remote sensing, GIS applications based turnkey solutions for improved agriculture, integrated watershed management, ground water potential exploration, wasteland mapping, crop health solutions, forest mapping & management, drought monitoring & mitigation, environment & disaster management all leading to integrated rural development.

- 9.1. Agricultural Cropland Inventory
- 9.2. Soil surveys & Investigations
- 9.3. Plantations / Forest Mapping
- 9.4. Identification of Potential Fishing Zones



X. INFORMATION TECHNOLOGY

Employing the most contemporary technology available through strategic partnerships, we have technical tie-up with the industry leaders and thus bring in the best of the technology and expertise to suit the specific needs for each of the assignments we undertake and deliver the best. The IT Centre in Sumadhura Geomatica has been established to keep pace with the latest developments in information Technology and to take up consultancy assignments related to software development e.g. Development of Management Information System (MIS), Geographical Information System (GIS), etc.

- 10.1 Application Development
- 10.2 Software Integration
- 10.3 MIS Development
- 10.4 Implementation SW for Utilities
& Services Sectors



Why Sumadhura?

- Promoted by Technocrats with decades of experience
- Strength of about 200 highly-specialized staff
- One stop Solution for World class affordable solutions
- Strategic alliances with International reputed firms
- State-of-the-art Delivery Centres equipped with latest technologies
- Recognized by National Remote Sensing Agency, Dept. of Space, Govt. of India
- Sumadhura is a leading engineering consultancy organization in Andhra Pradesh executing major share of projects under “Jalayagnam” Programme.
- The total extents of ayacut cover more than 5 lakh acre ayacut. For which Sumadhura is responsible for Detailed Surveys, Investigations, Design of structures, preparation of Land Acquisition proposals, estimates, planning distributory network etc.
- Sumadhura is equipped with latest Survey equipment, GPS gadgets and high range communication facilities. This combination helps us to carry out field works at very short span of timelines.
- Our engineering team comprises of experienced engineers retired from various engineering departments, young and energetic youth; altogether forward the momentum of execution at very high speed.
- Our clients recognize us for our distinguished combination of expertise in various disciplines like Surveying, CAD/GIS mapping and Design Engineering. Our engineers are known for making most efficient and economical design to help reduce the cost of the project and deliver the maximum outage.
- Sumadhura has been accredited with ISO 9001:2000 certification for our practices in place and quality deliverables.
- Sumadhura has been rated its financial consistency as SME-2 (high level of credit worthiness) by CRISIL adjudged in relation to other SME's.

Our Major Clients:

- 1 Water And Power Consultancy Services (INDIA) Ltd., (WAPCOS), New Delhi
- 2 RITES Limited, Gurgoan
- 3 Andhra Pradesh State Remote Sensing Applications Centre, Hyderabad
- 4 National Remote Sensing Agency, Dept of Space, Hyderabad (NRSA)
- 5 Oil & Natural Gas Corporation Ltd., (ONGC), KOLKOTA
- 6 Irrigation & CAD Dept., Govt. of Andhra Pradesh, Hyderabad
- 7 Andhra Pradesh State Irrigation Development Corporation Limited, Hyderabad
- 8 Water Resources, Govt. Of Orissa, Bhuvaneshwar
- 9 GMR-Hyderabad International Airport Limited, Hyderabad
- 10 Maytas Infra Private Limited, Hyderabad
- 11 Jaiprakash Associate Limited, Hyderabad
- 12 Hyderabad Urban Development Authority, Hyderabad
- 13 Hindustan Construction Co. Ltd, Mumbai
- 14 Andhra Pradesh Tribal Power Company Limited , Hyderabad
- 15 Andhra Pradesh Farmer Managed Groundwater Systems Project, Hyderabad
- 16 Geomysore Services (INDIA) Pvt. Ltd, Bangalore
- 17 Hari Environmental Systems Pvt. Ltd., Kolkotta
- 18 STUP CONSULTANTS Pvt. Ltd., Hyderabad
- 19 Indo Gold Mines Pvt Ltd., Bangalore
- 20 Gokulkrishna Constructions Private Ltd., Hyderabad
- 21 Madhucon Projects Limited
- 22 Asian Oil Field Services Limited, Vadodara
- 23 ENI INDIA LTD. NEW DELHI
- 24 INDIAN SCOOLOF BUSINESS, HYDERABAD
- 25 MEGHA ENGINEERING & INFRASTRUCTURE LTD., HYDERABAD
- 26 AKR CONSTRUCTION LTD, HYDERABAD
- 27 COASTAL PROJECTS PVT. LTD., HYDERABAD
- 28 Oil & Natural Gas Corporation Ltd., (ONGC), RAJAHMUNDRY

SURVEY EQUIPMENT:

Item description	Quantity/Nos.	Model / Version	Make/Manufacturer
Differential GPS (DGPS with RTK)	3 Nos.	SR 530	Leica Geosystems, Switzerland
Differential GPS (DGPS)	2 Nos.	GeoXT	Trimble Corporation, USA
Opto-Electronic Total stations	15 Nos.	TC 407	Leica Geosystems, Switzerland
Opto-Electronic Total stations	5 Nos.	TC 803	Leica Geosystems, Switzerland
Opto-Electronic Total stations	1 No.	GTS 220	Topcon Instruments, Australia
Auto levels	21 Nos.	NA730	Leica Geosystems, Switzerland
Digital Levels	1 No.		Leica Geosystems, Switzerland
Hand held GPS	2 Nos.	SportTrack	Magellan Corporation, Germany.
Walky-Talky sets	14 Nos.		Motorola, Taiwan.
Prismatic Compass	3 Nos.		Brunton, INDIA.

GEOPHYSICAL EQUIPMENT:

Item description	Quantity/Nos.	Model / Version	Make/Manufacturer
Resistivity Meters	4 Nos.	(DDR1-1 No., SSR-MP-ATS-1)	IGIS, India
Blast Induced Vibration Analyzer	1 unit		Canadian make
Magnetometers	3 units 3 units	Geometrics USA.	Terrasciences, India.
Induced Polarization Surveys	1 unit	Scintrex Ltd,	Canada.
Seismic unit	1 Set	24 Channel, Geometrics	USA.
Logging unit	1 set	Six parameters	(Scintrex make) Canada.

APPLICATION SOFTWARE:

Item description	Quantity/Nos.	Model / Version	Make/Manufacturer
Digital Photogrammetry	2 Nos.	DVP 5.4 DVP Geomatica	CANADA.
Digital Photogrammetry	1 No.	Leica Photogrammetry Suite	Leica Geosystems, swis.
CADD Software	1+3 Nos.	AutoCAD Map 2004	AutoDESK INC U.S.A.
CADD Software	3 Nos.	AutoCAD Map 2005	AutoDESK INC U.S.A.
CADD Software	1 No.	Microstation V8	Bentley Inc U.S.A.
Survey Data Processing SW	1 No.	CivilCAD Ver 5.2	Topcon Instruments, Aus.
Contour Generation SW	1 No.	Eagle Point Software	Eagle Point Inc., U.S.A.
GPS Post Processing Software	1 No.	SKI Pro	Leica Geosystems. swis.
Geomatica Software	5 Nos.	Geomatica Sierra soft,	France.
Multilingual software	1 No.	ISM Office (Multiuser)	CDAC, India.
GIS software	2 Nos.	ESRI ArcInfo 9.1	ESRI Inc., USA.
GIS Software	10 Nos.	ESRI ArcEditor 9.1	ESRI Inc., USA.
Gravity, magnetic data processing software	1 No.	2d GMPAC	Spectra Geoservices, India.
Resistivity data processing software	1 No.	RESINV	Spectra Geoservices, India.
Resistivity data processing software	1 No.	2dIPINV	Spectra Geoservices, India.

Computer Systems:

Item description	Quantity/Nos.	Model / Version	Make/Manufacturer
Desktop systems	32 Nos.	(P-IV 2.8 GHz, RAM, 40GB HDD)	Compaq 1320iL Intel Corporation.

Item description	Quantity/Nos.	Model / Version	Make/Manufacturer
High-end Systems	10 Nos.	(P-IV 2.8 GHz processors, 1GB RAM)	Intel Corporation.
Desktop systems	15 Nos.	(P-IV 2.2 GHz, 512 MB, 40 GB) Intel Corporation.	Intel Corporation.
Desktop systems	10 Nos.	P-III Processors,	Intel Corporation.
Desktop Systems	3 Nos.	Celeron model,	Intel Corporation.
HP Compaq desktops	20 Nos.	(P-IV, 3.00GHN, 1GB 80GB HDD)	Intel Corporation.
GIS Workstations	3 Nos.	Hp	HP Corporation
Photogrammetry Workstations	2 Nos.	Hp	Hp Corporation

LCD Projector:

LCD Projector	1 No.	EMP S1 H	EPSON Peripherals
---------------	-------	----------	-------------------

Printers/Copiers/MFD:

Gestetner DSM 622, 22CPM (A3 size Printer/Copier/Scanner)	1 No.
Ricoh Aficio 3224C MFD Color printer/copier/Scanner (A3 size)	1 No.
HP LaserJet 3030 all-in-one (A4 Printer/Copier/Scanner/Fax)	2 Nos.
HP LaserJet 1320 (A4 Duplex printer)	1 No.
HP DeskJet 1180C printer (A3 color printer)	1 No.
HP DeskJet 4255 all-in-one (A4 Printer/Copier/Scanner/Fax)	2 Nos.
HP LaserJet 100 printer	1 No.

UPS/Inverters:

3 KVA UPS (with 2 hours battery backup)	3 Nos.	American Power Corporation.
2.2 KVA UPS (with 2 hours battery backup)	2 Nos.	American Power Corporation.
1.2 KVA UPS (with 2 hours battery backup)	3 Nos.	American Power Corporation.

backup)		
5 KVA Sine-wave Inverter System (with 3 hours batter backup for the whole data processing production facility)	1 No.	Sukam Inverter Systems, Ind.
5 KVA APC	2 Nos.	Sukam Inverter Systems, Ind.

Plotters/Scanners/Copiers:

A0 Plotter	1 No.	HP DesignJet500 Hewlett Packard Inc., USA.
A0 Plotter	1 No.	HP DesignJet1015CM+ Hawlet Packard Inc., USA.
A0 Colour Scanner	1 No.	Chameleon TX Base Contex, Germany
A0 Monochrom Laser Plotter	1 No.	CADD Centre OCE TD3320, OCE Technologies, B.V. The Netherlands.

Laptop Systems/PDA :

Laptop Systems	4 Nos.	Compaq Presario P2210AS Compaq Corporation.
Pocket PC	1 No.	iPAQ H6365 Palmtop Compaq Corporation GSM enabled iPAQ for GIS data collection)
Pocket PC	1 No.	iPAQ H2210 Palmtop Compaq Corporation (GSM enabled for GIS data collection)

Servers:

IBM x226 Series Server	1 No.	IBM Inc., USA (Intel Xeon 3.04GHZ, 1GB RAM 140 Hard disk)
GIS/Photogrammetric Server	1 No.	HP

Network Infrastructure:

48 port switches	1 No.	10/100 MBPS managed DLink Corporation.
48 port switches	1 No.	10/100 MBPS unmanaged, CISCO

		Managables.
16 port switches	2 Nos.	10/100 MBPS unmanaged DLink Corporation.
8 port switches	2 No.	10/100 MBPS unmanaged DLink Corporation.
Networking racks	1 No.	9U Configuration, RookTech, India.

List of Projects:

Sl. No.	Name of the work	Name of the Project & Location	Owner or sponsoring Authority	Completion Time
1	a) Stereo Plotting of part of Bangalore city on 1:2000 scale b) Compilation of Maps on 1:1000, 1:5000, 1:10000 & 1:20000 Scales	Digital Photogrammetric Mapping	National Remote Sensing Agency, Hyderabad	25.10.2000
2	Photogrammetry Systems and compilation on 1000,5000,10000 and 2000 scales for Area "Q" of N-394	Digital Photogrammetric Mapping	Head, Purchase & Stores, NRSA, Hyderabad	20.04.2002
3	Photogrammetry Systems for N-431 as per the technical specifications mentioned in the Guidelines Document 2002 provided by AS&DM Group.	Digital Photogrammetric Mapping	National Remote Sensing Agency, Hyderabad	10.02.2003
4	Photogrammetry Systems for extra area of N-392 as per the technical specifications mentioned in the Guidelines Document 2002 provided by AS&DM Group.	Digital Photogrammetric Mapping	National Remote Sensing Agency, Hyderabad	05.11.2003
5	Wetleasing of 2D mapping using high resolution satellite (IKONOS) data for Jabalpur town and surroundings without map	2D Mapping using high resolution Satellite (IKONOS)	NRSA, HYDERABAD	15.11.2004
6	Photogrammetric Systems for contouring of N-438 (Harimpur)	Mapping using high resolution satellite data for part of Hyderabad	National Remote Sensing Agency, Hyderabad	17.06.204
7	2D map Updating high resolution satellite (IKONOS) data for Jabalpur town and surroundings without map compilation.	2D On-Screen Satellite data interpretation	Head, Purchase & Stores, National Remote Sensing Agency, Hyderabad	13.05.2004
8	Hydraulic designs, preparation of drawings based on survey data for laying underground drainage network for Zone I and Zone-II of Uppal Municipality	Underground Drainage Network System for Zone I, Zone II	Commissioner Uppal Kalan Municipality	09.02.2004
9	conducting Detailed investigation of distributory network including Field channel network for the distributories from D1 to D9 under low level left main canal, Makthal mandal, Mahaboobnagar district.	Sangambanda Balancing Reservoir Project	Superintending Engineer, I & CAD Dept., BLIP Circle, Pebbair, Mahaboobnagar district, AP	25.06.2004

10	Conducting micro level surveys for excavation of field channels, including distributories and direct pipes	Boath Project, Karatwada and Bazar hatnur	SE (I & CAD), Irrigation Circle, Nirmal, ADILABAD, AP	25.06.2004
11	Preparation of pre-bid studies, bill of quantities for trunket execution of balance works of ash pond 'A' (stage-I) at itps.	Digital Photogrammetric Mapping	National Remote Sensing Agency, Hyderabad	25.02.2004
12	Conducting micro-level surveys for excavations of field channels of main canals, distributaries and direct pipes.	Suddavagu Project, Bhainsa, Adilabad	Executive Engineer, I & CAD Dept., Bhainsa, Adilabad, AP	12.03.2004
13	Detailed Engineering Surveys for identification and preparation of alternative proposals, final designs, cost estimate etc. for safe storage of surplus storm water.	Water Supply Improvement Scheme for Sivasagar Tank in Vikarabad Municipality	Superintending Engineer, (Public Health) West Circle, Hyderabad.	20.04.2004
14	Conducting chain survey compass survey and command area survey at 30 metres grid interval etc.,	Yerravagu Project Kalwada (V), Dahegoan (M), Adilabad District	Executive Engineer, P.P. Rao Project Division Bellampally, Adilabad, AP	20.04.2004
15	Suvey at every 3m interval grid. Area covering 65 Acres. Preparation of Contour Map and Superimposed the map on Cyberabad-Hitech integrated Township initial Level drawing file supplied by client.	Cyberabad – Hitch integrated Township	M/s.INDU Projects Limited, Hyderabad	15.10.2005
16	Wetleasing of Photogrammetry Systems for 3D mapping & contouring for Visakhapatnam N-470	Photogrammetry Systems for 3D mapping & contouring for Visakhapatnam N-470	National Remote Sensing Agency, Hyderabad	17.11.2005
17	Preparation of pre-bid studies, bill of quantities for trunket execution of balance works of ash pond 'A' (stage-I) at itps.	Investigational Design of Balance works of Ash pond – A	M/s.HARI ENVIRONMENTAL SYSTEMS, Kolkota	01.09.2005
18	Conducting Sire surveys, Design, estimation and preperation of Land acquisition for package No.31 of HNSS project in Anathapur District, Andhra Pradesh.	HNSS Project	M/s. R.Maheswara Naidu Contractors, HYDERABAD	15.10.2005
19	GMR – Hyderabad International Airport Limited– Conducting Topographic Surveys, along the existing Right of way (ROW), Running Continuous open traverse along the existing road and alignments, collection of details of all features such as structures etc.,	Proposed Elevated expressway corridor from Shantinagar flyover to Shanshabad of about 24 Km length	GMR-HIAL (Hyderabad International Airport Limited), Hyderabad	31.05.2005

Sl. No.	Name of the work	Name of the Project & Location	Owner of sponsoring Authority	Completion Time
20	1) Dam Location Survey: Reconnaissance, maps/satellite imagery collection and study, establishment of primary control GPS station, Alignment survey with total station, L-Section, X-Sections @ 10m (100m on U/S & D/S), Topographical plan with contours on U/S and D/S. 2) Reservoir Area Survey: Establishment of primary control GPS stations, Secondary control Total station points,	Sripada Sagar Project (Yellampally Barrage)	Irrigation & CAD Dept., SSP Circle, Manchiryal through M/s.STUP Consultants P.Ltd., HYDERABAD	15.03.2005
21	A.P.F.M.G.S. Project – The goal of this project was to demystify farmer's unawareness through participatory Hydrological Monitoring. The net result is increased agricultural productivity through intensive and extensive hydrological monitoring.	APFAMGS Project, PMT Office, Hyderabad	M/s.PRIYUM ADVISORY AND CONSULTANCY SERVICES, AHMEDABAD	05.02.2006
22	Detailed investigation of 4Nos. Of Lift Irrigation Schemes of main canal of Tadipudi Lift Irrigation Scheme and Investigation of Distributary System to irrigate an ayacut of 68800 Acres (27843 Hectares) including surveying with chain & compass	Tadipudi Lift Irrigation Scheme	M/s. INDU Project Limited, Hyderabad	20.08.2006
23	Preparation of detailed project report for lifting 2.00 TMC of water near NTPC reservoir to irrigate 2,.... Acres in upland areas of Kamanpoor, Mutharam Mandals of Manthani.	Upland areas of Kamanpoor, Mutharam Mandals of Manthani Constituency (Not covered in SRSP Command)	SSP Division No. 1, Ramagundam, Dist. Karimnagar.	15.09.2006
24	This scope of work is as per the terms & conditions given to M/s. Maytas Infra Private Limited by the Project Administrator and Superintending Engineer, Construction Circle, Dowaliswaram, Andhra Pradesh, vide agreement No.36/2004-2005, dated 4.10.04 (Some of the important details/specifications and scope of work are enclosed with this work order).	Tadipudi Lift Irrigation Scheme, Tadipudi	M/s.Maytas Infra Limited, HYDERABAD	20.06.2006

Sl. No.	Name of the work	Name of the Project & Location	Owner of sponsoring Authority	Completion Time
25	Pre-bid Consultancy services covering of inputs collected from different sources, conducting Preliminary surveys/reccy and preparation of tentative quantities and estimations of the Udayasamudram Balancing Reservoir Project.	AMR SLBC Project	Maytas Infra Ltd, Hyderabad	Completed
26	Consultancy services for LIFTING 2.00 TMC of water near NTPC Reservoir, Ramgundam in Karimnagar district. For identification of new ayacut of 20,000 acres in upland areas of Manthani Constituency (not covered in SRSP command) of Karimnagar district and providing drinking water and industrial requirements to enroute villages by utilizing existing tanks and proposing new balancing reservoirs including with R&R plan and obtaining approval from the competent authorities.	Sripada Sagar Project	The Superintending Engineer, Irrigation & CAD Dept., Mancherial, Adilabad District-504 208	Completed
27	Survey and Preparation of Land Plan Schedules for the Tunnel I Outlet site area of SLBC Project	AMR Project	Jaiprakash Associates Ltd, Nalgonda	20.04.2006
28	Cross Section survey of Sileru River for preparation of Disaster Management Plan of downstream areas of Jalaput. Balimela, Upper Sileru Donkarayi & Fore bay Dams	Cross Sectional Survey for Upper Sileru, Donakarayi & Forebay Dams.	Water and Power Consultancy Service (INDIA) Ltd	23.07.2006
29	DGPS survey, Geotechnical Investigation, Design, Detailing and Estimation	Lift Irrigation Scheme Project	APSIDC Division, Srikakulam	30.01.2007
30	Satellite Imagery data processing, interpretation and preparation of report for feasibility of study of 315 km railway route in UAE	Feasibility study of Railway line	RITES Limited, Gurgoan	16.12.2006
31	Proposed Elevated Expressway corridor from Mehdipatnam Jn to Aramgarh Jn on NH-7- Construction of trumpet interchange at Shamshabad - Land Acquisition - Peg marking on ground.	HUDA Project	HUDA, Hyderabad	10.07.2006
32	Preparation of Catchment area Treatment plan Of Lower penganga Irrigation Project	Lower Penganaga Irrigation Project	Bhagavathi Ana labs Ltd, Hyderabad	10.12.2006

Sl. No.	Name of the work	Name of the Project & Location	Owner of sponsoring Authority	Completion Time
33	Survey, Detailed Investigation of Left Main Canal and including Distributaries, Minors, Sub-minors, field Channels, and all CM & CD works preparation of Designs, Drawings, Preparation of Land plans Schedules, Ayacut Registers, Ayacuts Maps Lining Estimates and fixing of benchmark stones, getting approval from the concerned authorities as per design criteria of I&CAD Department A.P.	Shankara Samudram Project, Mahaboobnagar District	M/s. KNR-BPL JOINT VENTURE, HYDERABAD	10.08.2007
34	Photogrammetry Systems for carrying out job pertaining to area Block - C of N-413	Digital Photogrammetric Mapping	National Remote Sensing Agency, Hyderabad	10.05.2007
35	Survey, Detailed Investigation of Right Main Canal and including Distributaries, Minors, Sub-minors, field Channels, preparaion of Hydraulic Particulars, Designs, Drawings, Preparation of Land plans Schedules, Ayacut Registers, Ayacuts Maps Lining Estimates and Fixing of Benchmark Stones, getting approval from competent authorities as per Design Criteria of Irrigation Department.	Sangambanda Poject , Mahaboobnagar District	M/s.R.M.Mohite & co. - Bhoorathnom Construction Co. (P) Limited	20.04.2007
36	Land use / Land cover, Geomorphology, Lithology, Geologic Structure, Ground water potential, Mineral, Slope, Drainage, canal network, command area boundaries, Surface water bodies and watershed, Transport network and settlement and conservation plans, Administrative boundries like village, Mandal, District & forest, collection .	Kadapa district (E&SW part as shown in the map)	Andhra Pradesh state Remote Sensing Applications Centre	05.05.2007
37	Conducting Survey & Levelling Operation along the Krishna River from Pulichinthala Project Dam Site to Prakasham Barrage.	Pulichintha Project Cirlce, Jaggaiahpet	Irrigation & CAD Department	25.06.2007
38	SURVEY AND LEVELLING Operation for raising and widening of flood bank to 1986 standards in GH division for V.R.F.B. for Km 0.00 to 23.00 including formation of BT road	Godavari Head Works Division, Dowalaiswaram	Irrigation & CAD Department	09.06.2007

Sl. No.	Name of the work	Name of the Project & Location	Owner of sponsoring Authority	Completion Time
39	SURVEY AND LEVELLING Operations for raising and widening of flood bank to 1986 standards in GH division for V.R.F.B. for Km 68.00 to 90.20 including formation of BT road	Godavari Head Works Division, Dowalaiswaram	Irrigation & CAD Department	09.06.2007
40	SURVEY AND LEVELLING Operations for raising and widening of flood bank to 1986 standards in GH division for V.R.F.B. for Km 45.500 to 68.00 including formation of BT road	Godavari Head Works Division, Dowalaiswaram	Irrigation & CAD Department	09.06.2007
41	SURVEY AND LEVELLING Operations for raising and widening of flood bank to 1986 standards in GH division for V.R.F.B. for Km 40.00 to 40.200 including formation of BT road	Godavari Head Works Division, Dowalaiswaram	Irrigation & CAD Department	09.06.2007
42	SURVEY AND LEVELLING Operations for raising and widening of flood bank to 1986 standards in GH division for V.R.F.B. for Km 23.00 to 45.500 including formation of BT road	Godavari Head Works Division, Dowalaiswaram	Irrigation & CAD Department	09.06.2007
43	Satellite data interpretation GIS analysis work for preparation of Land use – landcover maps for areas D/S of five Dams in Sileru basin	Sileru River Baisn	Water and Power Consultancy Service (INDIA) Ltd	12.04.2007
44	Conducting Survey, detailed investigation of main canal and distributary system for 7300 Acres including subsoil exploration by VES method, fixing alignment, preparation of Hydraulic particulars, design, drawing, preparation of detailed quantities, preparation of Land plan schedules, preparation of Pipe-wise ayacut registers, fixing of Benchmarks stones on the basis of approved design, drawings and estimates.	Mid Manair Right Side Canal, Karimnagar District	Buccha Reddy & Co	05.05.2008
45	Excavation of flood flow canal taking off from Mahendratanya River near Chapara Village of Milliaputti mandal in Srikakulam District formation offshore reservoir near Regulapadu village and formation of canals from reservoir including distributary network	Vamsadara Project	Indu Projects	28.10.2007

Sl. No.	Name of the work	Name of the Project & Location	Owner of sponsoring Authority	Completion Time
46	Preparation of PFR for 5 Nos. MHP Projects on local streams of Adilabad Dist.	Pre-Feasibility Report for Mini-hydel projects	Andhra Pradesh Tribal Power Company Ltd, Hyderabad	29.12.2007
47	Preparation of Design works of Veligonda Tunnel – 2 Project.	Veligonda Tunnel – 2 Project	HCC – CPPL Joint Venture, Hyderabad	25.10.2007
48	On screen interpretation of hydrogeomorphological maps on 1:50,000 Scale as per RGNDWM project Phase III guidelines.	Rajiv Gandhi National Drinking Water Mission Project (RGNDWM)	APSRAC, Hyderabad	-
49	Satellite data interpretation & GIS analysis work for water supply conduit corridor planning proposed intake points at Godavari Pranahita rivers to Hyderabad.	GIS analysis works of Sileru River Basin	Water and Power Consultancy Service (INDIA) Ltd	12.04.2007
50	Satellite data Interpretation and GIS Analysis works for preparation of Land use-Land cover maps for areas down stream side of five dams in Sileru River Basin	GIS analysis works of Sileru River Basin	Water and Power Consultancy Service (INDIA) Ltd	18.02.2007
51	Additional Cross Section Survey of Sileru River for Preparation of Disaster Management Plan of downstream areas of Jalaput, Balimela. Upper Sileru. Donkarayi & Forebay Dams.	GIS analysis works of Sileru River Basin	Water and Power Consultancy Service (INDIA) Ltd	12.02.2007
52	Soil Investigation at various Drill Sites in Different fields at Rajhamundry Asset during (2007-08 & 2008-09) (33 Locations)	Geotechnical Investigations at 33 drill locations	Oil & Natural Gas Corporation Ltd, Rajhamundry	05.11.2009
53	Topographical surveys for Kozhikode City in Kerala	Kozhikode City Mapping project, Kerala	Water and Power Consultancy Service (INDIA) Ltd	28.02.2008
54	Nation Wide Mapping of Land Degradation using Multi Temporal Satellite Data 1:50,000 scale, under Natural resources Census.	National Wide Mapping Project	APSRAC, Hyderabad	15.08.2008

Sl. No.	Name of the work	Name of the Project & Location	Owner or sponsoring Authority	Completion Time
55	Hiring of Services for Soil sample collection for Geo-Chemical prosperity by absorbed gap survey in NELP Block PA-ONN-2004/1 of Purnea Block	Geochemical sampling of Purnea Block- CBM Project	Oil & Natural Gas Corporation Ltd, Kolkata	31.01.2008
56	Topographical Survey works: Carrying out Line Implementation Survey using Totalstations and Control Survey. Fixing of reference points using DGPS including construction and fixing of reference pillars at line ends, river crossings and road crossings etc., all necessary preparations as required to carry out Seismic Data Acquisition.	Topographical and Control Survey of Mizoram	M/s. Asian Oilfield Services Ltd, Vadodara. Ultimate client: OIL INDIA LIMITED	05.01.2010
57	Detailed Engineering Consultancy of Gouravelly Reservoir with Project gross capacity of 1.410 TMC water including Construction of H.C Weir, Forming Earth Dam, Head Regulators on Left and Right Side, Formation of Diversion Road including construction of DLR Bridge, Investigation, Designing and Estimation to irrigate an ayacut 1,06,000 acres near Gouravelly (Village), Husnabad (Mandal), Karimnagar (Dist).	Gouravelly Irrigation Project, Karimnagar Dist, Andhra Pradesh	GokulKrishna Constructions Private Limited	15.02.2010
58	Pre Bid consultancy services for Manthani L.I.Scheme including allied works - Lifting of 2.00 TMC of water from cistern near NTPC reservoir to feed an ayacut of 20,000 Acres in Amanpur and Mutharam Mandals of Karimnagar Dist.	Pre-bid Consultancy work of Manthani L.I.Scheme	GokulKrishna Constructions Private Limited	28.02.2008
59	Rajiv Bhima Lift Irrigation Scheme- Package No.47- Consultancy Services for preparation of Designs for CM & CD works on main canal, preparation of detailed Estimates and drawings, Submitting proposal to Engineer-incharge/CDO, attending to all technical queries raised by engineer-incharge or engineers of CDO. The scope of the work includes conducting site surveys on locations CM & CD works but excluding infall structure at Ch 27.975 km	Rajiv Bhima Lift Irrigation Scheme-Package No.47	PVRR Constructions	10.03.2008

Sl. No.	Name of the work	Name of the Project & Location	Owner or sponsoring Authority	Completion Time
60	Conducting surveying and leveling operations and preparing designs, drawings and detailed estimates for construction of flood banks/protection works duly noting the river profile and encroachments on left and right side of kundu river, chema kalva, maddileru vagu, remodelling of chinna cheruvu near nandyal, Kurnool District and preparation of detailed project report	Topo graphical surveys for Kundu River	I & CAD Department, Kurnool	03.04.2008
61	Pre-bid Consultancy services covering evaluation of inputs collected from different sources, conducting preliminary surveys/ reccy and VALUE ENGINEERING, preparation of tentative quantities and estimations for package No.3,4,5 of Pranahitha-Chevella Lift Irrigation scheme link, for execution of "Investigation ,Design and Execution of Lift Irrigation scheme for drawal/lifting of 83.29 TMC of water from Mid Manair to new reservoir at Anantagiri Village , Illanthakunta Mandal, Karimnagar Dist. Ref.Tender Notice No.49/2007-08 , 50/2007-08 & 51/2007-08 Dated 03.03.2008.	Pranahitha-chevella Projects Packages - 3,4,5	HCC - MEIL JV, Hyderabad	04.04.2008
62	Topographical survey involved in the work of one well position for ENI India Ltd for Rajasthan block RJ-ONN-2003/1	Topographical survey	ENI India Limited, New Delhi	09.04.2008
63	Conducting preliminary and detailed surveys and preparation and submission of detailed project Report, designs, drawings and estimates for the work of providing lift irrigation Scheme to Konalmakula area by lifting 1 TMC water from Narsimuhula Chervu of Manugonda (v) Geesugonda (M), Waraangal (Dist) and feeding the Cheru through DBM-38 of Kaktiya canal of SRSP stage -I .	Konalmakula Canal	Construction Circle , I& CADD Hanamkonda	16.04.2008
64	Pre-bid Consultancy services covering evaluation of inputs collected from different sources, conducting preliminary surveys/ reccy and VALUE ENGINEERING, preparation of tentative quantities and estimations for package No.11 of Pranahitha-Chevella Lift Irrigation scheme link - IV, for execution of "Investigation ,Design and Execution of Lift Irrigation	Pranahitha-chevella Lift Irrigation Schem-Package No-11	AKR Construction Ltd. Hyderabad	19.04.2008

	scheme for drawal/lifiting of 83.29 TMC of water from Mid Manair to new reservoir at Anantagiri Village , Illanthakunta Mandal, Karimnagar Dist. Ref.Tender Notice No.2/2007-08 Dated 22.03.2008.			
65	Contour survey for the Indian School of Business, at Gachibowli, Hyderabad	Topographical survey	Indian School of Business, Hyderabad	05.05.2008
66	Pre-bid Consultancy services covering evaluation of inputs collected from different soures, conducting preliminary surveys/ reccy and VALUE ENGINEERING,preparation of tentaive qunties and estimations for package No.13 of Pranahitha-Chevella Lift Irrigation scheme link - IV, for execution of "Investigation ,Design and Execution of Lift Irrration scheme for drawal/lifiting of 77.14 TMC of water from New Reservoir at Tadkapalli (V) to new reservoir at Thipparam Village, Kondapaka Mandal, Medak District by water conveyor system with all associated components as mentioned in tender notice no. TENDER NOTICE NO 5/2007-008. Deted 22.03.2008.	Pranahitha- Chevella Lift Irrigation Schem-Package No-13	AKR Construction Ltd. Hyderabad	08.05.2008
67	Pre-bid Consultancy services covering evaluation of inputs collected from different soures, conducting preliminary surveys/ reccy and VALUE ENGINEERING,preparation of tentaive qunties and estimations for package No.12 of Pranahitha-Chevella Lift Irrigation scheme link - IV, for execution of "Investigation ,Design and Execution of Lift Irrration scheme for drawal/lifiting of 83.29 TMC of water from New Reservoir at Imamabad to new reservoir at Tadkapalli Village, Siddipet Mandal, Medak District, INcluding preliminary designs of new reservoir but excluding E& M and hydro mechanicalsystem with all associated components as mentioned in tender notice no. TENDER NOTICE NO 5/2007-008. Deted 22.03.2008.	Pranahitha-chevella Lift Irrigation Schem-Package No-12	Maytas Infra Ltd, Hyderabad	15.05.2008
68	Pre-bid Consultancy services covering evaluation of inputs collected from different soures, conducting preliminary surveys/ reccy and VALUE ENGINEERING,preparation of tentaive qunties and estimations for package No.14 of Pranahitha-	Pranahitha-chevella Lift Irrigation Schem-Package No-14	Maytas Infra Ltd, Hyderabad	20.05.2008

	Chevella Lift Irrigation scheme link – IV, for execution of "Investigation ,Design and Execution of Lift Irration scheme for drawal/lifiting of 74.44 TMC of water from New Reservoir at Thaipparam (V) to new reservoir at Pamulparthy Village, Wargal Mandal, Medak District, Including preliminary designs of new reservoir but excluding E& M and hydro mechanicalsystem with all associated components as mentioned in tender notice no. TENDER NOTICE NO 5/2007–008. Deted 20.05.2008			
69	Pre-bid Consultancy services for carrying out traversing of prosed canal alignment of 90 km in length for the construction of package –22 of pranahitha– chevella lift Irrigation Scheme, fixing central line alignment as per the given coordinates and carring levels along the center line of canal. Charges for soil investigationm by Electrical resistivity method at 200m interal. And preparation of report based on method Engineering classification of sub –soils beneath the proposed canal alignment.	Pranahitha–chevella Lift Irrigation Schem–Package No-22	Indu Projects Limited Hyderabad	11.06.2008

List of Registrations / Empanelments / recognitions with Public & Private Sector Clients:

S. No	Empanelment / Registration	Name of the Employer (or) Registration Authority	Areas of Empanelment / Registration	Reference
1	Quality Certification ISO 9001:2000	DNV, The Netherlands	Topographical Survey, CAD, GIS, Photogrammetry and providing customer specific Design & Estimates.	Certificate No. 03015-2005-AQ-BOM-RbA
2	Associate Consultant	Orissa Construction Corporation Limited, Govt. of Orissa	Topographic Survey and Mapping. Remote Sensing and GIS based resource Mapping. EIA & EMP Studies, Preparation of Designs & drawings using computer aided tools. Geotechnical and Soil Investigations. Bench Mark Study on performance evolution of Irrigation projects. Project consultancy services, Feasibility studies and preparation of detailed project Report.	No. 3796/396/OCC/2007
3	Enlistment	Oil & Natural Gas Company Ltd.,	Survey, Investigation, Site Contour Survey, Pipeline Route Survey, Soil resistivity Survey, Hydrographic Survey	No. CIDC/ONGC/96001
4	Registration	NRSA, Dept. of Space, Govt. of India, Hyderabad	Photogrammetric jobs for preparation of digital topographic (2D/3D) maps	NRSA/DA-A:AS&DP: 1125:1999-2000
5	Empanelment	APSRAC	Remote Sensing, GIS & GPS Application Projects	No. APSRAC/98/2005/827
6	Registration	Andhra Pradesh Transmission Company Ltd. Hyderabad	Survey and Investigation Works of Transmission lines etc.	No. SE/TLCH/Tech/F-197/D.No. 1349
7	Registration	Bangalore Development Authority, Bangalore	Topographical Survey Works, Cadastral Surveys etc.	No. BDA/TPM/3776/05-06
8	Short listed	AP Tribal Power Company Ltd., Hyderabad	Preparation of PFR, DSI & DPR for Mini Hydel projects	APTRIPCO/TEC-E/91/06-07
9	Registration	Hindustan Construction Company Ltd, Mumbai	Topographical Survey and Geotechnical Investigation	SC/100/REGL/L-0300
10	Certification	CRISIL SME Rating (SME 2)	High level of "Credit worthiness"	RP/SMER/SUMGPL/2008/0076